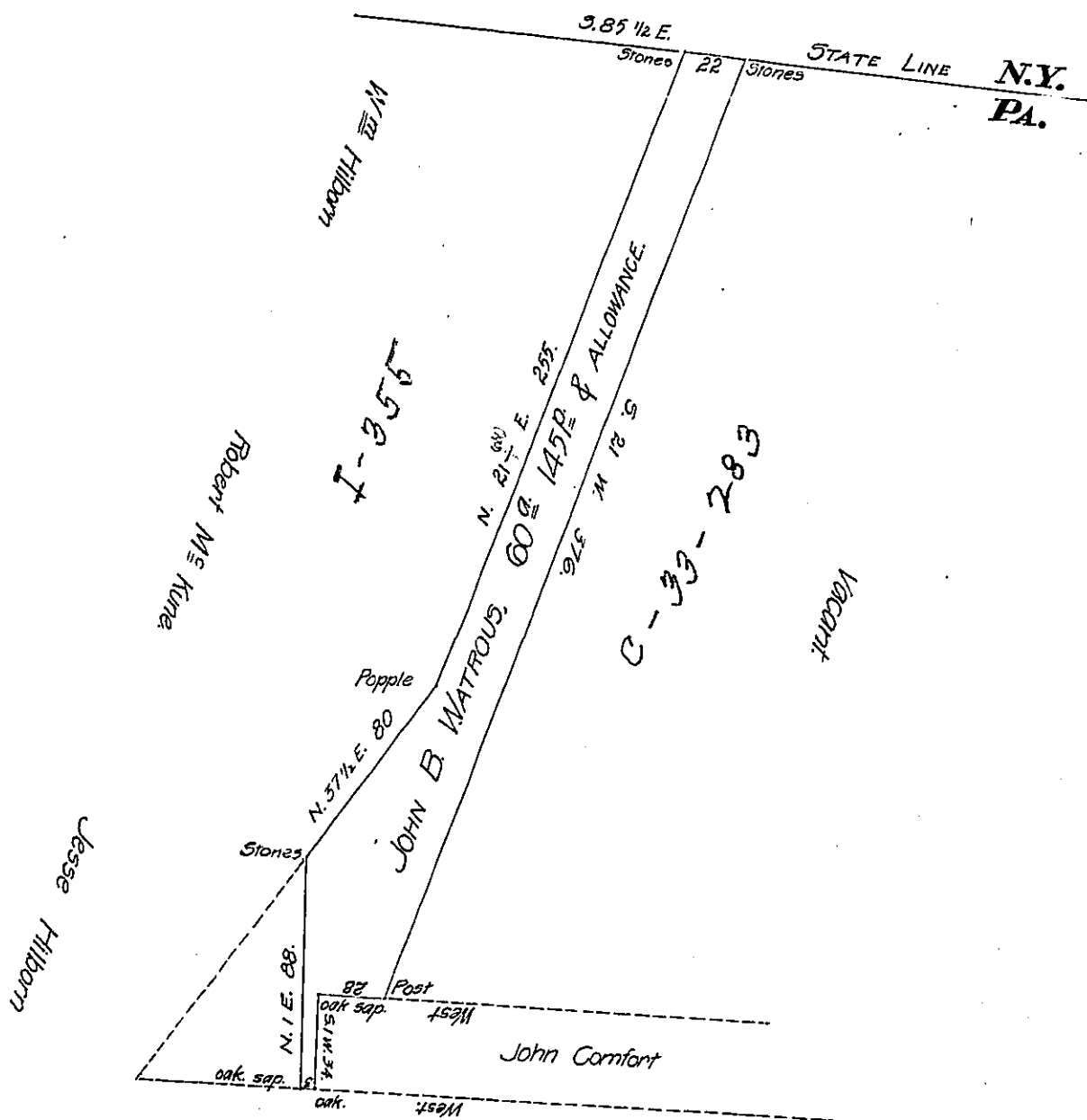


Windoor, Broome Co., N.Y.



C-166-166 Jesse Lane.

A Draught of a tract of land Situate on the East Side of the Susquehanna River, in the Township of Harmony, Susquehanna County. Adjoining lands Granted to John Comfort and Jesse Lane on the South; Jesse Hilborn, Robert M<sup>e</sup> Kune and W<sup>m</sup> Hilborn on the West, and the New York State Line on the North, and vacant land on the East. Containing Sixty Acres and one hundred and forty five perches and the usual allowance of Six per Cent for Roads, &c. Surveyed January 3<sup>rd</sup> A. D. 1840, for John B. Watrous in pursuance of a Warrant Dated the Ninth day of December A. D. 1839, By

John Boyle Dep. Surveyor.

To Jacob Sallade Esq. S.G.

IN TESTIMONY that the above is a copy of the original remaining on file in the Department of Internal Affairs of Pennsylvania, made conformably to an Act of Assembly approved the 16th day of February, 1833, I have hereunto set my Hand and caused the Seal of said Department to be affixed at Harrisburg, this Seventeenth day of October 1907.

*Henry Houder*  
Secretary of Internal Affairs.